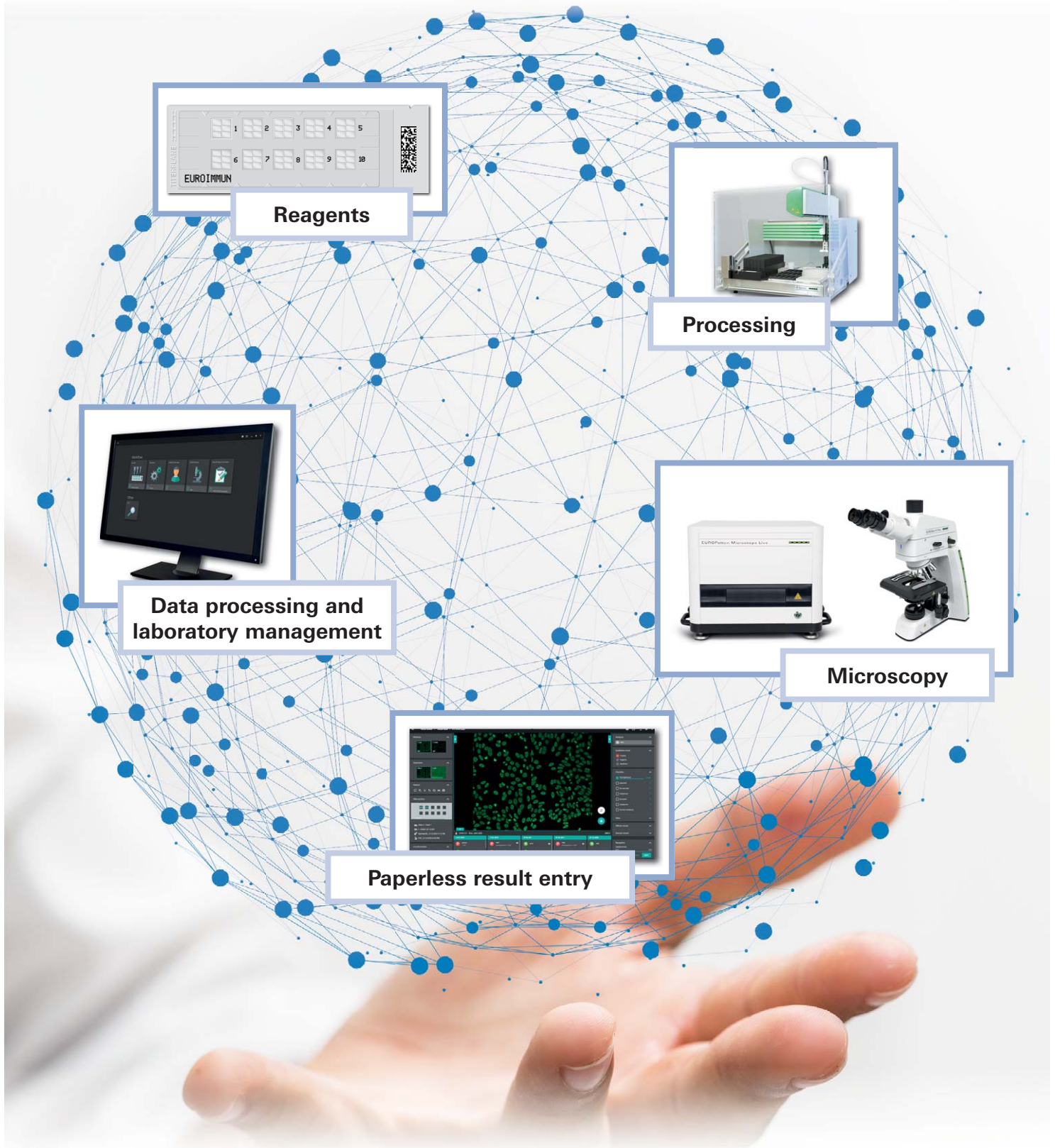




IIFT automation for small and medium laboratories





EUROIMMUN reagents – quality meets functionality

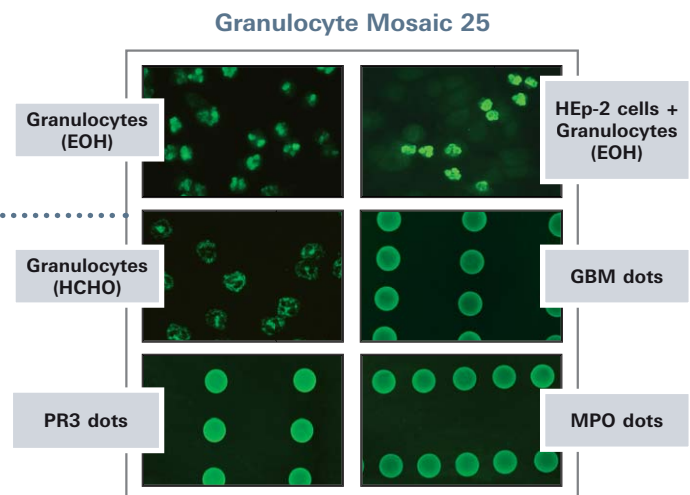
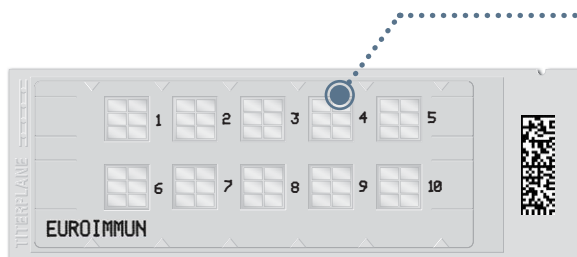
BIOCHIP technology allows:

- Multiparameter analysis: different substances combined as a mosaic in one test field
- Monospecific confirmation of results with antigen dots (EUROPLUS)
- High lot consistency

Slides are equipped with a matrix code for maximum reliability and traceability

Comprehensive product range for the following parameters:

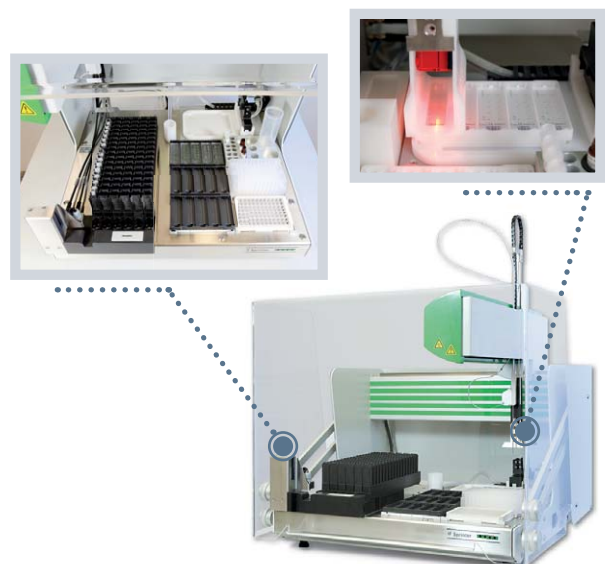
- ANA (HEp-20-10 cells: extra high number of mitoses per BIOCHIP for optimal interpretability)
- ANCA (combination of ethanol (EOH)- and formalin (HCHO)-fixed granulocytes for differentiation of vasculitis from chronic inflammatory bowel diseases (CIBD))
- Neural autoantibodies (unique parameter spectrum)
- EmA (distinct pattern on primate liver)
- AMA/ASMA (VSM47 cells for F-actin)
- Crithidia & Crithidia sensitive for screening
- Organ-specific autoantibodies
- Infection parameters



IF Sprinter – fully automated processing

Fully automated processing of immunofluorescence tests, from the dilution and dispensing of samples to the incubation and washing of microscope slides

- Up to 96 samples and 15 slides per run
- Automated sample registration with the integrated barcode reader during insertion of the rack into the device
- Secure slide identification due to optionally available DataMatrix code reader
- Up to 12 controls and 8 reagents in racks customised for EUROIMMUN reagents
- Simple operation for short hands-on times
- Online connection to EUROLabOffice 4.0 or LIS



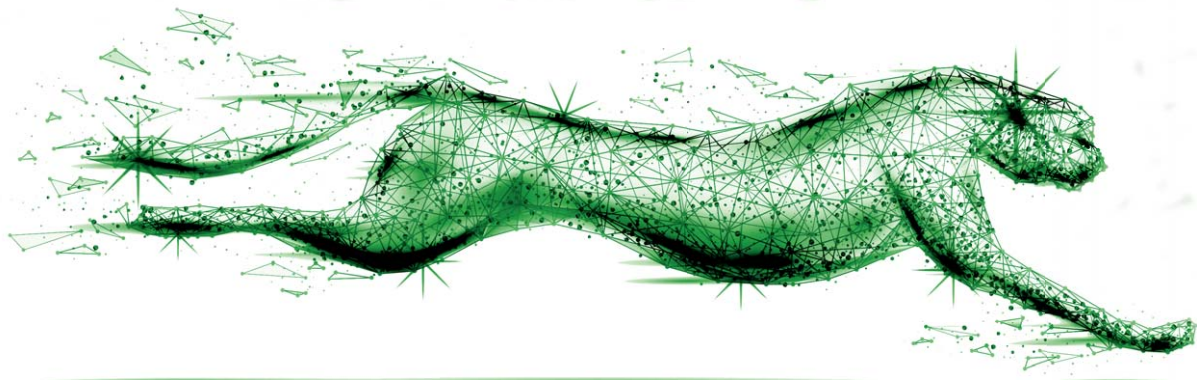


EUROStar IV Plus – reliable immunofluorescence microscopy

- Secure and reproducible results due to constant light intensity
- Economical: LED with a useful life of more than 50,000 hours, low current consumption
- Environmentally friendly: no mercury, no UV radiation
- User-friendly: The LED is on full power directly after switch-on.
- Support for quality management: EUROIMMUN regularly checks the light output of installed EUROStar IV Plus microscopes and provides a certificate.
- Reliability: Worldwide there are more than 1000 EUROStar microscopes in use.



EUROPattern Microscope Live – Top-speed microscopy



- Fully automated image recording and state-of-the-art result evaluation on the screen – the end of the dark chamber
- Recording of high-quality images in only two seconds – a new dimension of fluorescence microscopy
- Security and traceability thanks to automated identification of slides by means of matrix codes
- Constant and standardised fluorescence signals for all devices due to an integrated fluorescence standard
- Unique automated calibration of the microscope for comparability between results from different devices
- Intuitive live microscopy with multi-touch navigation and zooming directly on the computer screen
- Bidirectional data exchange with the laboratory information system (LIS) for paperless working and secure information flows





EUROLabOffice 4.0 – the control centre for your laboratory

- Integrity of data and results due to an entirely paperless work process (quick, simple and reliable)
- Automated data processing and communication without transmission errors
- Automatic creation of electronic worklists
- Reporting support: day's results for a patient, patient history, search function, documentation and archiving
- Optimisation of existing laboratory processes, various expansion modules available
- Interface to laboratory management system (LIS) for bidirectional data exchange and optimal connection to EUROIMMUN devices



EUROPattern Classifier – computer-aided IIFT evaluation

Pattern recognition based on deep convolutional neural networks

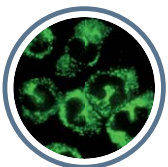
The EUROPattern Classifier, which can be integrated into EUROLabOffice 4.0, automatically generates a result proposal (including titer calculation) for a constantly growing number of substrates.

This involves classification of the detected fluorescence patterns by means of deep convolutional neural networks, an artificial intelligence method. All the individual findings obtained with the substrates and dilutions are then consolidated into one result proposal for each patient.



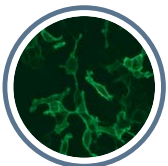
ANA diagnostics

- HEp-2/HEp-20-10 cells
- Crithidia luciliae



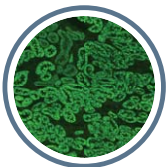
ANCA diagnostics

- Granulocytes
- HEp-2 cells + granulocytes (EOH) **NEW**
- EUROPLUS antigen dots



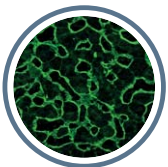
Diagnostics based on antigen-expressing cells

- **Neurology:** e.g. AMPA 1/2, NMDAR, GABAR B1/B2, LGI1, CASPR2, DPPX, aquaporin-4 and MOG
- **Nephrology:** PLA2R and THSD7A
- **Infection diagnostics:** EBV-CA, EBV-EA and EBNA



Diagnostics of autoimmune liver diseases

- Liver (rat)
- Kidney (rat)
- Stomach (rat) **NEW**
- VSM47 cells (rat) **NEW**



Diagnostics of autoimmune gluten-sensitive enteropathy (coeliac disease) **NEW**

- Liver (monkey) IgA
- Oesophagus (monkey) IgA